

**2010-2011
JUVENILE COURT SERVICES
SCHOOL LIAISON
PROGRAM DATA**

**STATEWIDE
ANNUAL REPORT**

Report Compiled By



A Division of the Iowa Department of Human Rights

AUGUST 2011

2010-2011 Juvenile Court School Liaison Program Data

This report includes statewide aggregated data collected by Juvenile Court Services School Liaison (JCSL) staff across Iowa. JCSLs* have been providing services to youth since 1994 and have been reporting data to the Iowa Division of Criminal and Juvenile Justice Planning (CJJP) since 2000.

Data are provided to CJJP through statistical summary forms completed by JCSL staff. Because forms are completed only when meaningful contact between a student and a liaison takes place, only a portion of the total population served is reported. Meaningful contact is defined as having at least five contacts within a 60-day period (at any point during the academic year) regarding at least one of the referral reasons supplied on the form. Data are entered into a web-based application by the liaisons and retrieved electronically by CJJP via the internet. Service information is submitted and uploaded only at the end of the academic year.

Data regarding the youth served are reported annually by CJJP. Performance measures pertaining to attendance, trancies, tardies, suspensions, law violations, and grade point average are some of the key data collected and reported.

During the 2010-2011 school year, there were 98 school liaisons who reported on 4,047 students.

** Referred to as School-Based Interventionists in Judicial District 4*

2010-2011 Statewide JCSL Program Data

Total Number of Records 4,047

	<u>N</u>	<u>% of Total</u>		<u>N</u>	<u>% of Total</u>
Records per District			Age		
District 1	270	6.7%	<7	14	0.3%
District 2	597	14.8%	7-8	26	0.6%
District 3	414	10.2%	9-10	104	2.6%
District 4	627	15.5%	11-12	640	15.8%
District 5	1,082	26.7%	13-14	1,132	28.0%
District 6	347	8.6%	15-16	1,426	35.2%
District 7	550	13.6%	17-19	705	17.4%
District 8	160	4.0%			
Gender			Median Age	15.1 yrs	
Male	2,465	60.9%	Grade	K	2 0.0%
Female	1,582	39.1%		1	16 0.4%
Race				2	10 0.2%
Caucasian	3,026	74.8%		3	14 0.3%
African-American	527	13.0%		4	24 0.6%
Hispanic	333	8.2%		5	117 2.9%
Native American	30	0.7%		6	288 7.1%
Asian/Pacific	34	0.8%		7	478 11.8%
Mixed/Other	97	2.4%		8	533 13.2%
Parent/Guardian Relationship				9	735 18.2%
Parent	3,134	77.4%		10	711 17.6%
Parent & Other	592	14.6%		11	617 15.2%
Foster Parent	46	1.1%		12	502 12.4%
Relative	196	4.8%	Grade Level¹	Elementary	183 4.5%
Custodian	34	0.8%		Middle	1,299 32.1%
Friend	30	0.7%		High/Alternative	2,565 63.4%
Other	15	0.4%	Referral Source	School	2,253 55.7%
Cases w/JCS-DHS Workers	894	22.1%		JCS	1,012 25.0%
Enrolled in Education Program				School Liaison	208 5.1%
Yes	3,543	87.5%		Self Report	248 6.1%
No	504	12.5%		Family	170 4.2%
Exited Before Year End				DHS	31 0.8%
Yes	189	4.7%		Law Enforcement	62 1.5%
No	3,858	95.3%		Other	63 1.6%
Continued From Last Yr	1,227	30.3%	Referral Reasons²	Attendance	763 18.9%
Average Length of Service (Days)				Truancy Issues	354 8.7%
Overall Average	181.8			Disciplinary	1,730 42.7%
Elementary	188.1			Law Violations	1,144 28.3%
Middle	184.5			GPA/Academic	803 19.8%
High	180.0			Tardiness	242 6.0%
				Mental Health	402 9.9%
				Other	868 21.4%

¹ Grade Level was determined by grade: (K-5=Elementary, 6-8=Middle, 9+=High)² Referral Reasons will not add up to 100 percent since two responses are possible

2010-2011 SCHOOL LIAISON PROGRAM DATA STATEWIDE PERFORMANCE MEASURES

Performance measures are reported by the JCSL only if he/she had five meaningful contacts with a student within a 60-day period. Data are submitted only for youth who have reportable days/periods for the given construct. Youth with no reportable days/periods would be included under Not Applicable. For purposes of data collection *Pre-Performance* is defined as the term preceding or including the first contact date with a student and *Post-Performance* indicates the term including or following the last contact date with a student.

2010-2011 PERFORMANCE MEASURES

Measure	# of Students	%	Not Applicable	N/A %	Total # of Occurrences	Average Occurrence	High	Low
Attendance	3,378	83.5%	669	16.5%	45,091	13.3	180.0	0.5
Truancy	1,793	44.3%	2,254	55.7%	18,103	10.1	135.0	0.5
Suspensions	1,734	42.8%	2,313	57.2%	8,444	4.9	61.0	1.0
Tardies	2,902	71.7%	1,145	28.3%	60,564	20.9	247.0	1.0
Law Violations	1,467	36.2%	2,580	63.8%	2,275	1.6	12.0	1.0
GPA	3,176	78.5%	871	21.5%				

Notes -

- Attendance/Truancy/Suspensions are measured in days, Tardies are measured by class periods and Law Violations count 1 per arrest report
- Total # of Occurrences indicates the total number of days missed, periods tardy, or arrest reports for all records submitted

PERFORMANCE MEASURES: PRE-PERFORMANCE TO POST-PERFORMANCE

This table includes data pertaining to the six performance measures and whether or not performance improved, declined, or remained the same between the Pre-Performance and Post-Performance reporting periods:

Measure	Student Performance		
	Declined	Same	Improved
Attendance	44.4%	7.7%	47.9%
Truancy	47.5%	6.5%	46.0%
Suspensions	43.0%	7.2%	49.8%
Tardies	43.8%	6.8%	49.4%
Law Violations	19.6%	13.6%	66.8%
GPA	44.1%	9.9%	46.0%

The above table indicates a considerable improvement in the reduction of law violations. Of the 1,467 youth with law violations during the pre-performance period, 935 (64%) of them had no new violations during the post-performance period.

STATEWIDE PERFORMANCE MEASURES (Continued)

Law Violations By Average Number of Days Missed

The following reports the average number of reported days missed by number of law violations during the academic year.

Average # of Days Missed* Due To:	N	Total Number of Law Violations			
		0	1	2	3+
Attendance (excused)	3,378	12.7	13.9	16.1	16.2
Truancy (not excused)	1,793	9.3	10.2	13.1	12.9
Suspensions (in or out)	1,734	3.9	5.0	6.7	8.6

As the number of law violations increases, the number of school days missed also incrementally increases.

Grade Point Average By Average Number of Days Missed

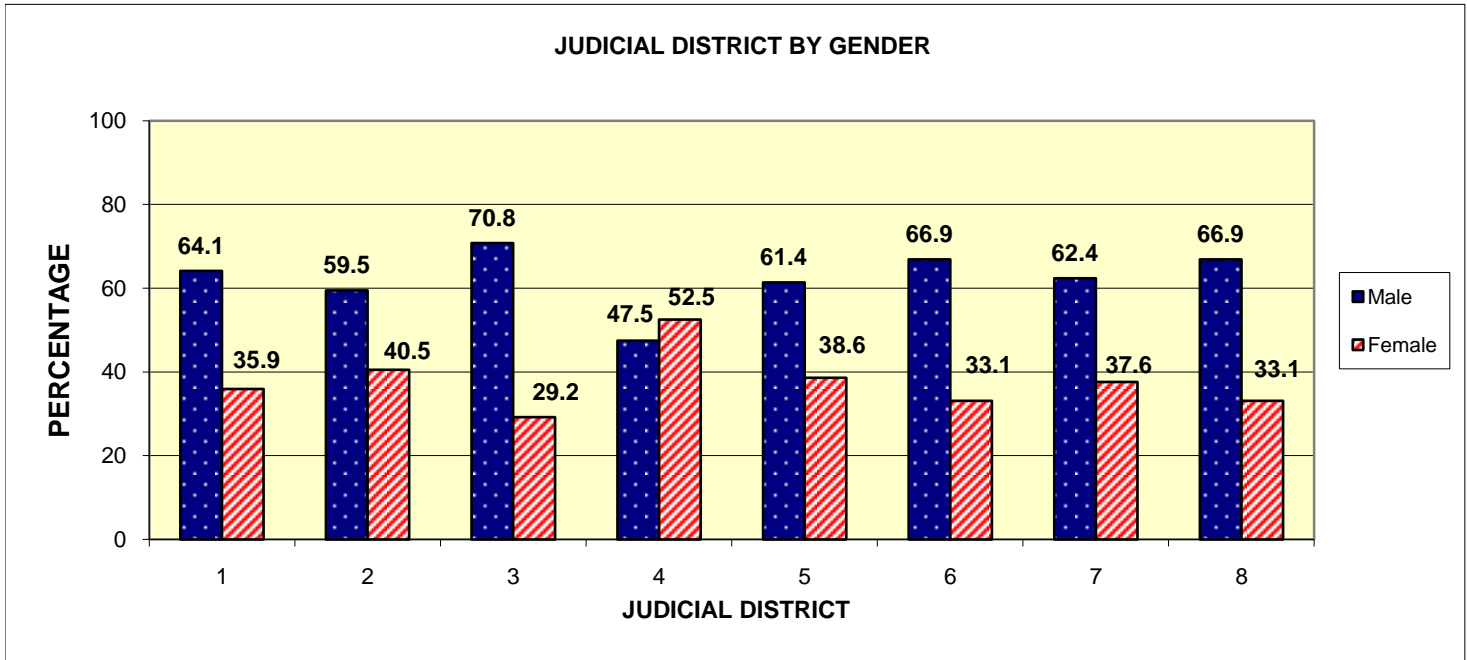
The following reports the average number of reported days missed by grade point average at the end of the academic year.

Average # of Days Missed* Due To:	N	GPA (Post-Performance Period)			
		0.0-1.0	1.01-2.0	2.01-3.0	3.01-4.0
Attendance (excused)	2,661	19.4	14.1	10.9	8.8
Truancy (not excused)	1,434	14.0	7.3	5.6	4.3
Suspensions (in or out)	1,404	6.0	4.8	4.2	3.0

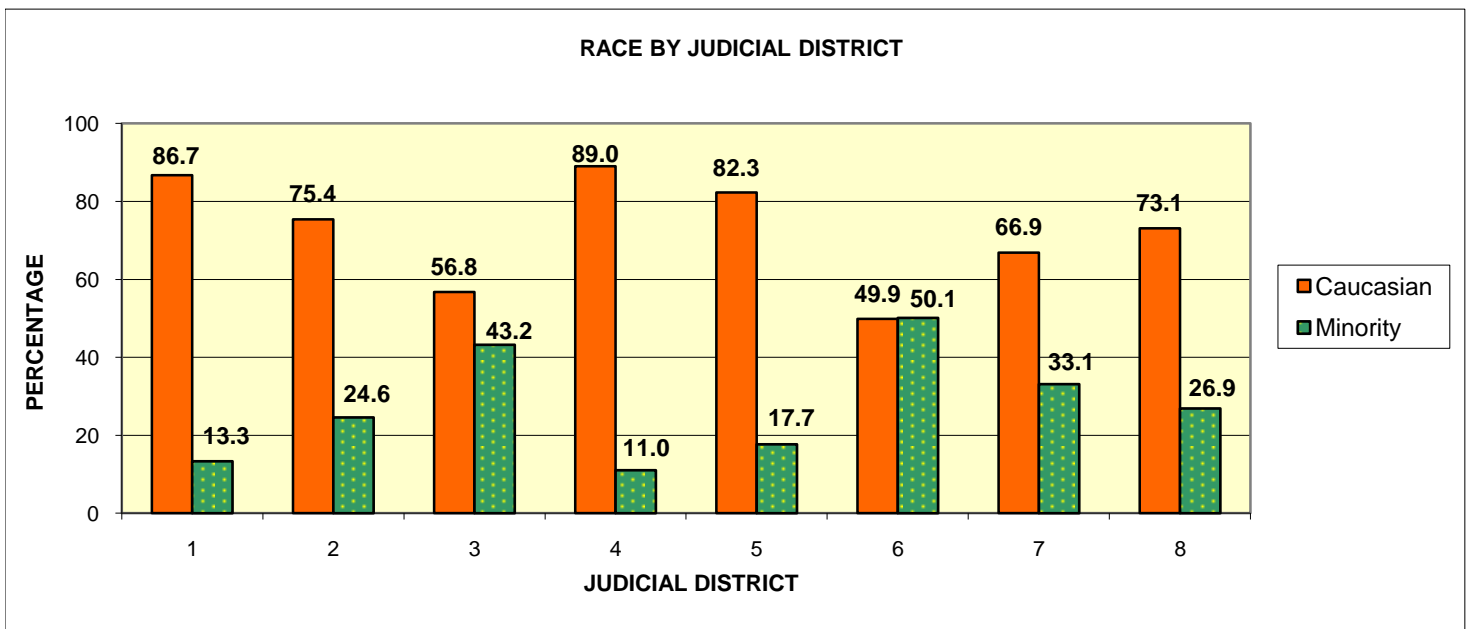
*Only youth with days missed in the given category are counted. For instance, if a youth had law violations, but no absences/truancies/suspensions he or she would not be counted.

Note - The GPA reported is that which was reported at the end of the post-performance period. Only youth with a reported GPA are included.

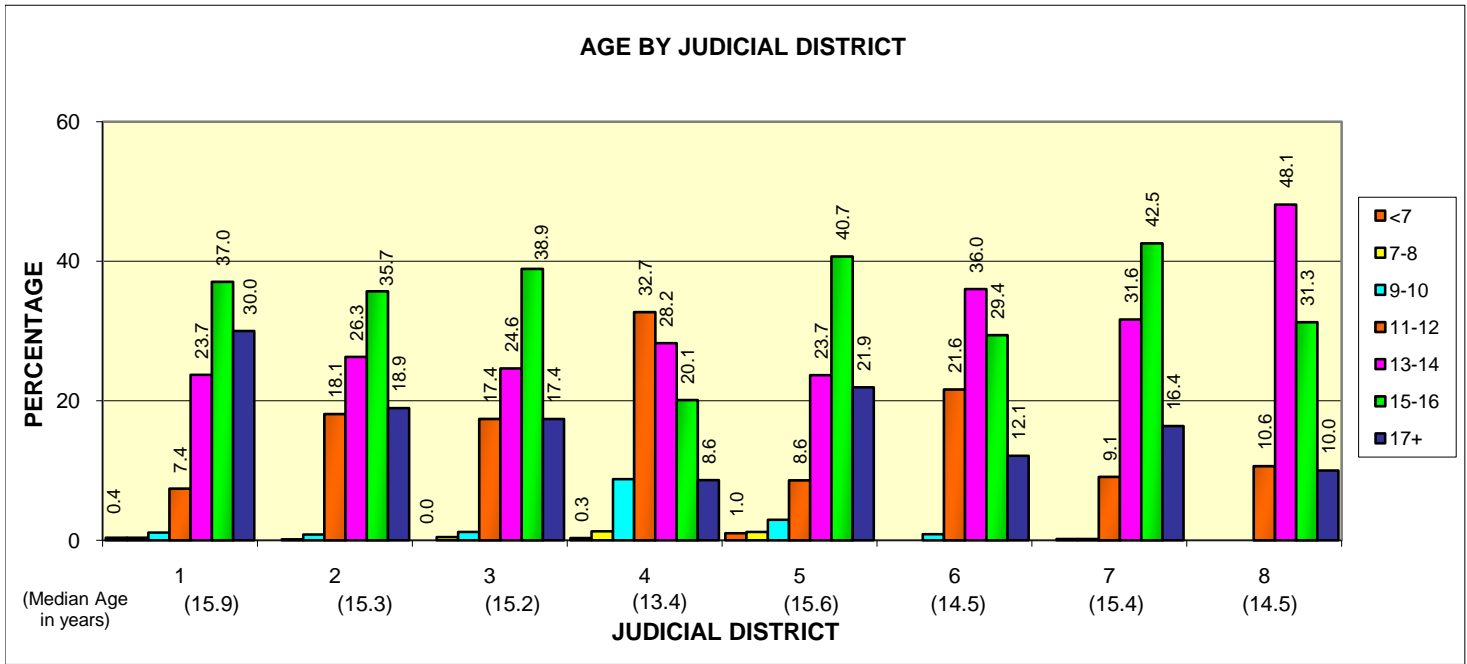
JUVENILE COURT SCHOOL LIAISON PROGRAM DATA 2010-2011 STATEWIDE AGGREGATED DATA BY JUDICIAL DISTRICT



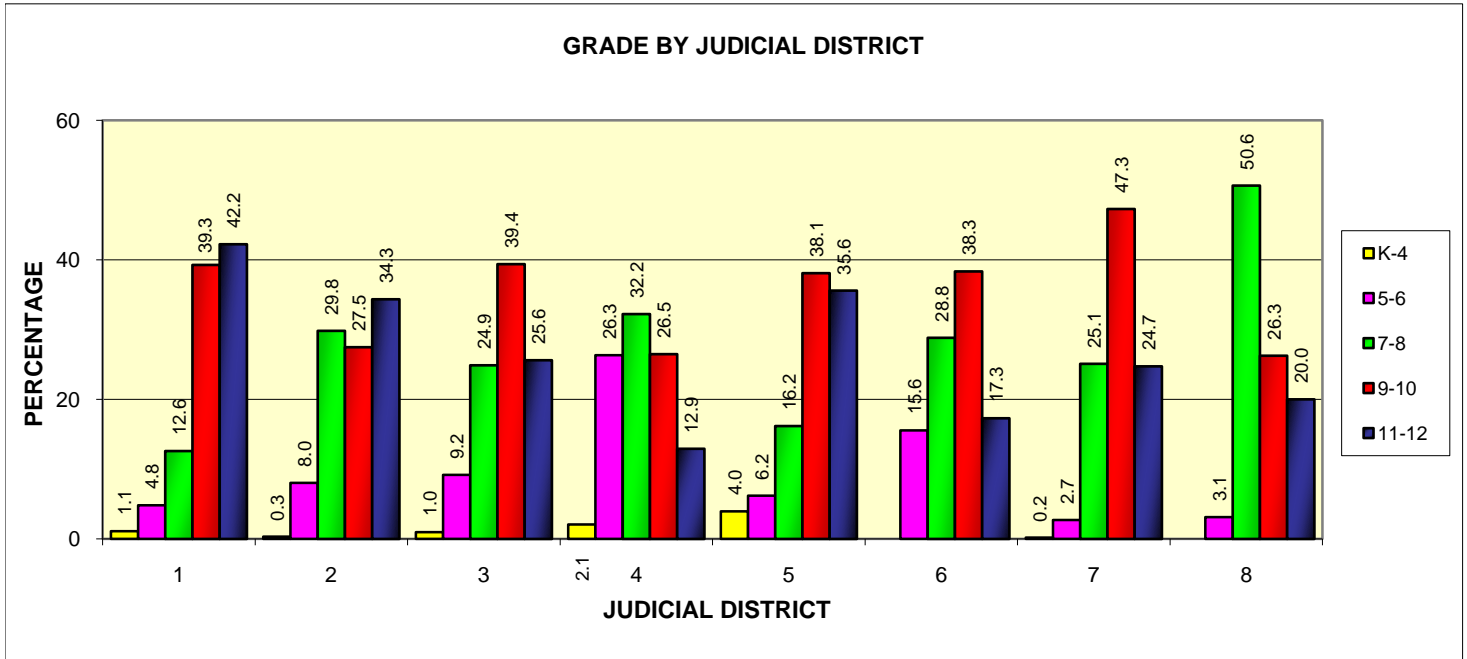
Gender	N	MALE	FEMALE
Statewide %	4,047	60.9%	39.1%



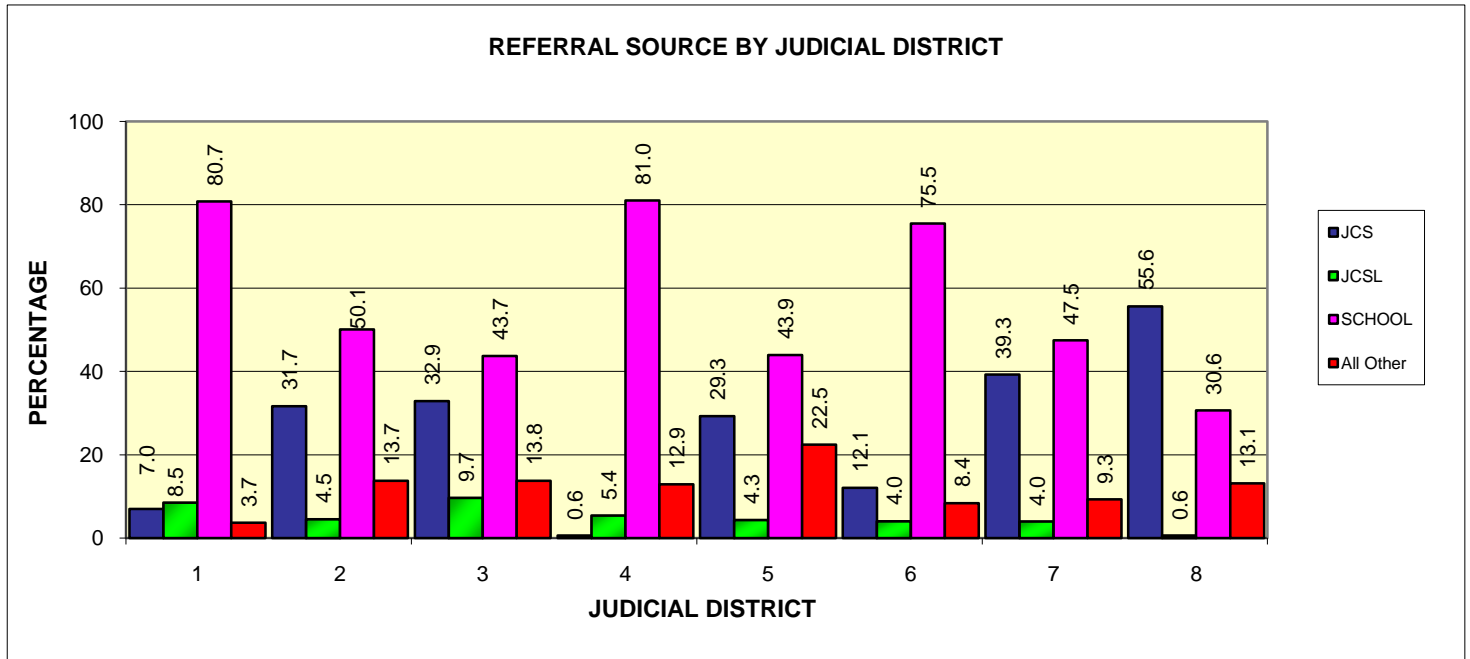
RACE	N	CAUCASIAN	AFRICAN-AMERICAN	HISPANIC	NATIVE AMERICAN	ASIAN/PACIFIC ISLANDER	MIXED/OTHER
Statewide %	4,047	74.8%	13.0%	8.2%	0.7%	0.8%	2.4%



AGE	N	<7	7-8	9-10	11-12	13-14	15-16
Statewide %	4,047	0.3%	0.6%	2.6%	15.8%	28.0%	35.2%
		17+					
		17.4%					



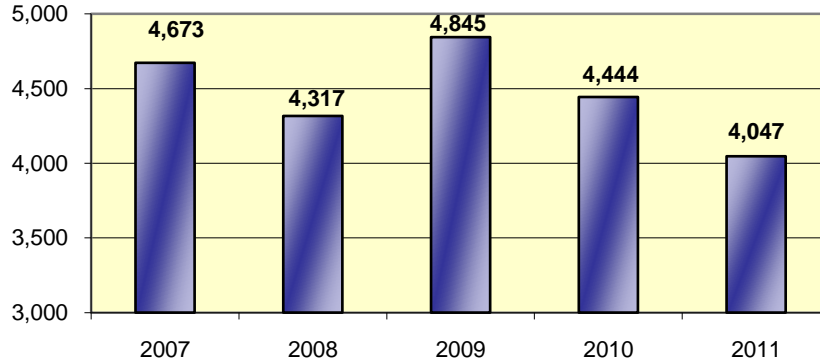
GRADE	N	K-2	3-4	5-6	7-8	9-10	11-12
Statewide %	4,047	0.7%	0.9%	10.0%	25.0%	35.7%	27.7%



REFERRAL SOURCE	N	JCS	JCSL	SCHOOL	DHS/LawEnf	Family/Self	OTHER
Statewide %	4,047	25.0%	5.1%	55.7%	2.3%	10.3%	1.6%

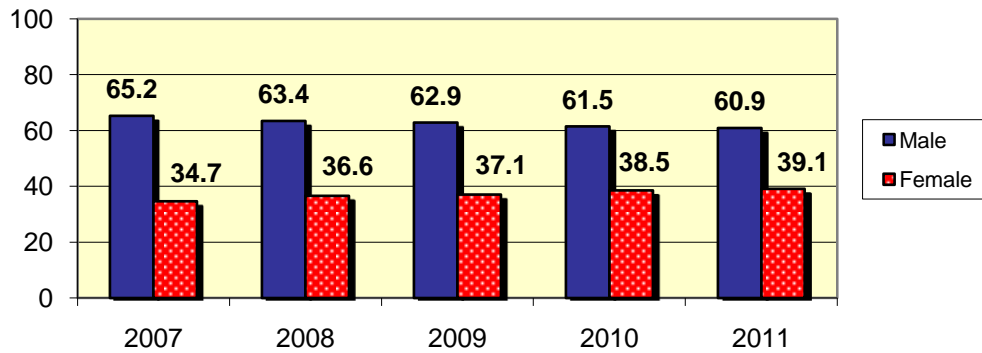
STATEWIDE TRENDS 2007-2011

Number of Records-Statewide

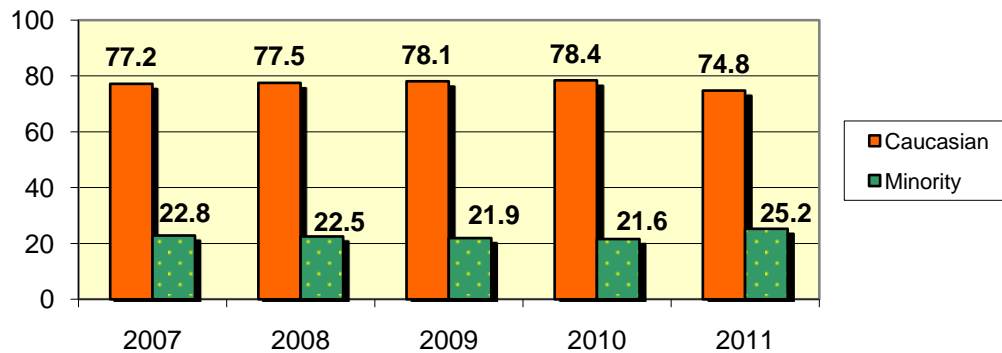


#Liaisons 139 125 122 106 98

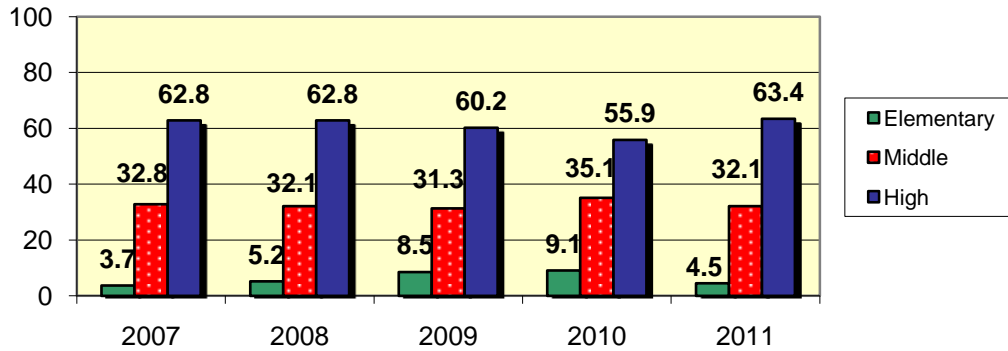
Gender-Statewide



Race - Statewide

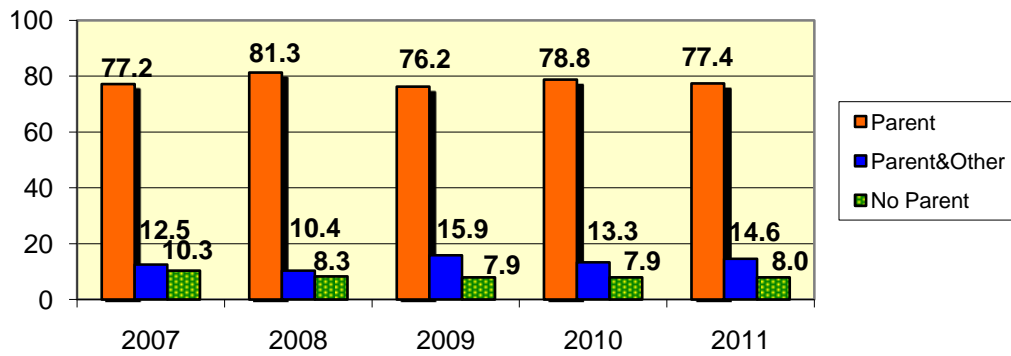


Grade Level - Statewide

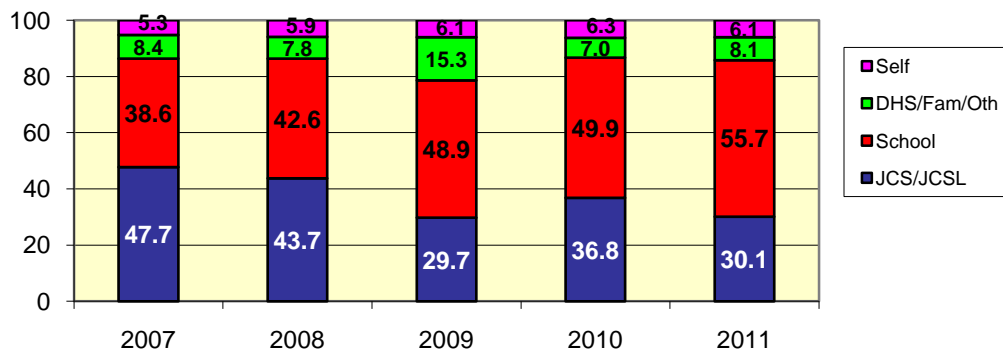


(Youth in Alternative Schools are counted under High School)

Parent/Guardian-Statewide

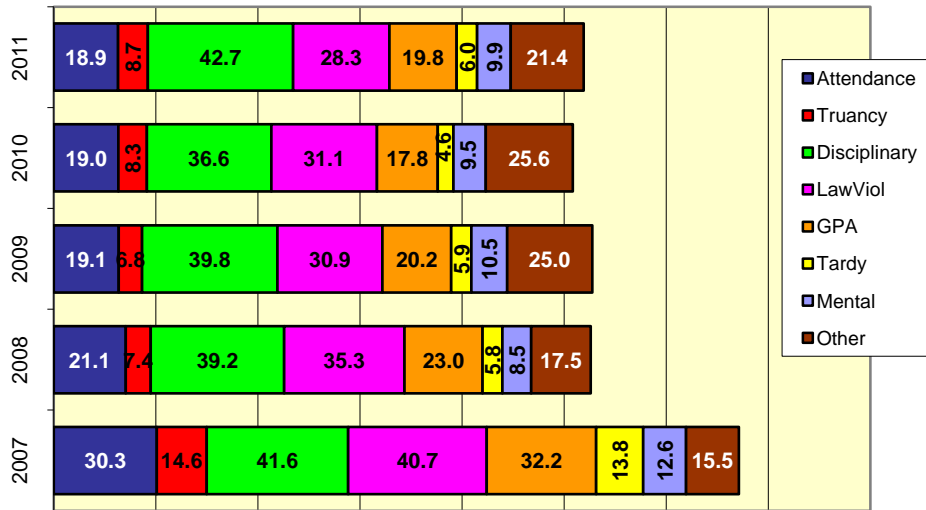


Referral Source - Statewide



(School Liaison referrals are counted under JCS)

Referral Reasons - Statewide



(Percentages in this chart will not add up to 100 as up to two responses are allowed)