

**2007-2008
JUVENILE COURT SERVICES
SCHOOL LIAISON
PROGRAM DATA**

**STATEWIDE
ANNUAL REPORT**

Report Compiled By



JULY 2008

2007-2008 Juvenile Court School Liaison Program Data

This report includes statewide aggregated data collected by Juvenile Court Services School Liaison (JCSL) staff across Iowa. JCSLs* have been providing services to youth since 1994 and have been reporting data to the Division of Criminal and Juvenile Justice Planning (CJJP) since 2000.

Data are provided to CJJP through statistical summary forms completed by the JCSLs. Forms are completed only when meaningful contact between a student and a liaison takes place, therefore, only a portion of the total population served is reported. Meaningful contact is defined as having at least five contacts within a 60-day period (at any point during the academic year) regarding at least one of the referral reasons supplied on the form. Beginning with the 2006-2007 academic year, a web-based application was developed for entry of the statistical information. Therefore, data are now entered into the application by the liaisons and retrieved electronically by CJJP via the internet. Service information is only submitted and uploaded at the end of an academic year.

Data regarding the youth served are reported annually by CJJP. Performance measures regarding attendance, truancies, tardies, suspensions, law violations, and grade point average are some of the key data collected and reported. During the 2007-2008 academic year, there were considerable changes in the collection and reporting of performance measures. The most notable change included the addition of "Not Applicable" (NA) as an accepted response, an indication that a youth did not have any reportable days or periods for the construct. If attendance was not an issue for a particular youth and there were no data to report, the JCSL was instructed to respond with NA. In previous years, if a youth had no reportable days missed due to absence, the liaisons were instructed to report zeroes for both pre and post performance. This practice affected the reliability of the data, as these youth would have reflected no change in performance in the annual report, when in fact the youth should not have been included in the reporting of the construct.

The other notable change in the collection of performance measures during the 2007-2008 school year was the addition of a third period for data reporting. In previous years, pre-performance (data prior to working with a student) and post-performance (data at the time of completing work with a student) were reported. For the most recent school year, liaisons were asked to also report a "during" interval, which represented the mid-point of the duration of time spent working with a student. Both of the changes to performance reporting were an effort to increase the reliability of the data collected, as well as to enhance data reporting.

During the 2007-2008 school year, there were 125 school liaisons who reported on 4,317 students. While historical reporting included trend data with regard to performance measures, performance trends will not be included in this report due to the changes in data collection discussed above.

* Referred to as School-Based Interventionists in one Judicial District

2007-2008 Statewide JCSL Program Data

Total Number of Records 4,317

	<u>N</u>	<u>% of Total</u>		<u>N</u>	<u>% of Total</u>
Records per District			Age		
1	656	15.2%	6	5	0.1%
2	758	17.6%	7-8	36	0.8%
3	509	11.8%	9-10	97	2.2%
4	265	6.1%	11-12	309	7.2%
5	1,143	26.5%	13-14	1,140	26.4%
6	363	8.4%	15-16	1,446	33.5%
7	449	10.4%	17-20	1,284	29.7%
8	174	4.0%			
Gender			Median Age 15.0 yrs		
Male	2,735	63.4%	Grade K	7	0.2%
Female	1,582	36.6%	1	15	0.3%
Race			2	15	0.3%
Caucasian	3,347	77.5%	3	35	0.8%
Af Amer	444	10.3%	4	64	1.5%
Hispanic	329	7.6%	5	76	1.8%
Native Am	44	1.0%	6	237	5.5%
Asian/Pacific	35	0.8%	7	439	10.2%
Mixed/Other	118	2.7%	8	746	17.3%
Parent/Guardian Relationship			9	695	16.1%
Parent	3,511	81.3%	10	802	18.6%
Parent & Other	450	10.4%	11	659	15.3%
Foster Parent	73	1.7%	12	527	12.2%
Relative	204	4.7%	Grade Level		
Custodian	31	0.7%	Elementary	224	5.2%
Other	48	1.1%	Middle	1,384	32.1%
Reporting Period			High	2,498	57.9%
Quarters	1,341	31.1%	Alternative	211	4.9%
Trimesters	731	16.9%	Referral Source		
Semesters	2,219	51.4%	School	1,841	42.6%
Term	17	0.4%	JCS	1,525	35.3%
Other	9	0.2%	School Liaison	362	8.4%
Enrolled in Education Program			Self Report	256	5.9%
Yes	3,665	84.9%	Family	191	4.4%
No	643	14.9%	DHS	62	1.4%
Not Reported	9	0.2%	Law Enforcement	62	1.4%
Exited Before Year End			Other	18	0.4%
Yes	218	5.0%	Referral Reasons (Two responses possible)		
No	4,099	95.0%	Attendance	912	21.1%
Continued From Last Yr 1,208 28.0%			Truancy Issues	320	7.4%
Average Length of Service (Days)			Disciplinary	1,694	39.2%
Overall Average	180.1		Law Violations	1,524	35.3%
Elementary	188.3		GPA/Academic	993	23.0%
Middle	180.1		Tardiness	251	5.8%
High	179.9		Mental Health	365	8.5%
Alternative	173.4		Other	756	17.5%
Reported JCS/DHS Workers 1,354 31.4%					

2007-2008 SCHOOL LIAISON PROGRAM DATA STATEWIDE PERFORMANCE MEASURES

JCSLs report performance measures only if they have had five meaningful contacts with a student within a 60-day period and submit data only for youth who have reportable days/periods for the given construct. Youth with no reportable days/periods would be included under Not Applicable. During the 2007-2008 school year, JCSLs were instructed to collect and report data from the following:

- ✓Pre Performance = Final Period of Previous School Year
- ✓During Performance = Mid-Point of Current School Year
- ✓Post Performance = End of Current School Year

If data were not available at these defined intervals, then JCSLs were instructed to report from three accessible, equivalent periods of time. For example, if data were not available from the previous school year, JCSLs were instructed to report from three quarters or trimesters during the current school year.

Data in the tables below are divided into two sections, noted by color. The data in blue include only the population of youth who had reportable data for the construct and the data in red indicate data either not reported by the JCSL or a count of students for whom the construct was not applicable. The data listed under Invalid indicate that a response was supplied, but it was outside of the possible field parameters. For example, a response of 122 days for Suspensions during a 90-day period would be invalid as there could only be a maximum of 90 days incurred.

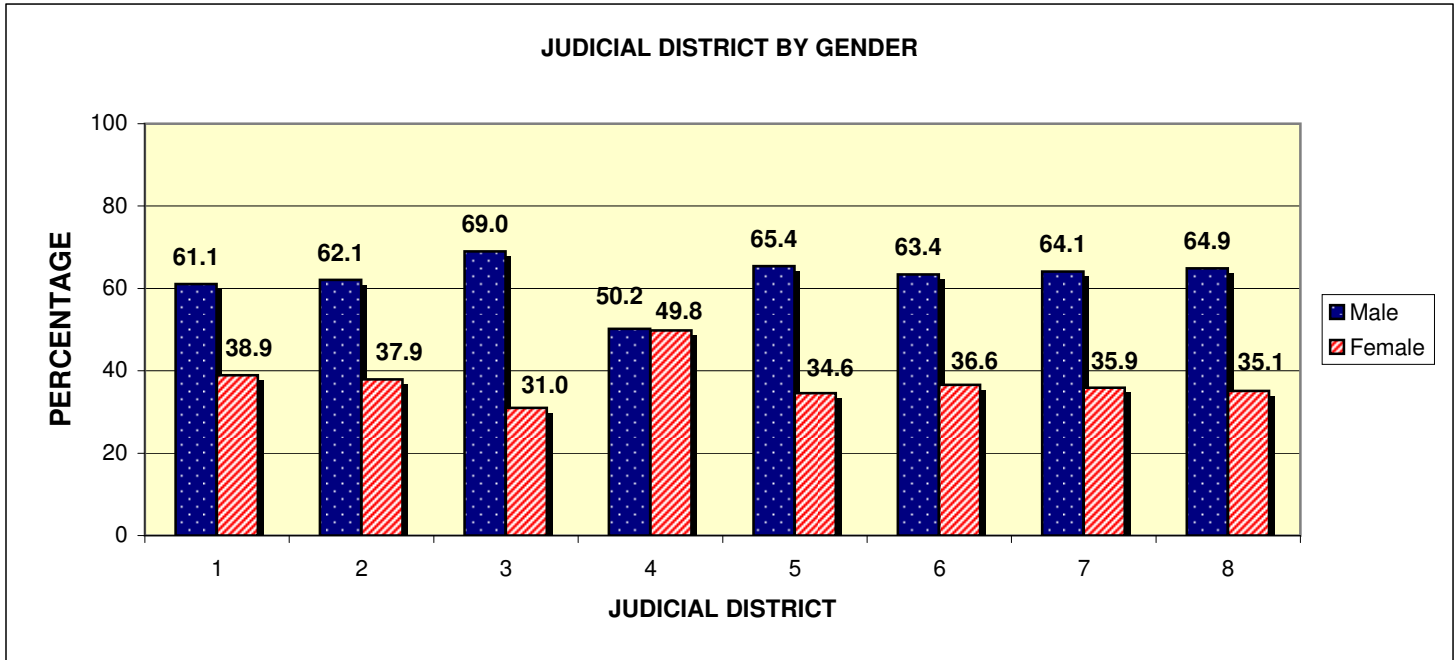
Performance Period: Pre-Performance to Post-Performance

Performance Measure	N	<i>Declined</i>	<i>Same</i>	<i>Improved</i>	N	<i>Not Applicable</i>	<i>Not Reported</i>	<i>Invalid</i>
Attendance	3,910	49.5%	9.0%	41.6%	407	137	241	29
Truancy	1,944	46.5%	16.7%	36.8%	2,373	2,155	216	2
Tardiness	3,295	45.3%	12.5%	42.2%	1,022	691	331	0
Suspensions	1,819	46.0%	23.6%	40.4%	2,498	2,137	180	1
Law Violations	1,766	18.3%	37.3%	44.3%	2,551	2,435	116	0
GPA	3,094	46.6%	6.9%	46.5%	1,223	0	1,223	0

Performance Period : During-Performance to Post-Performance

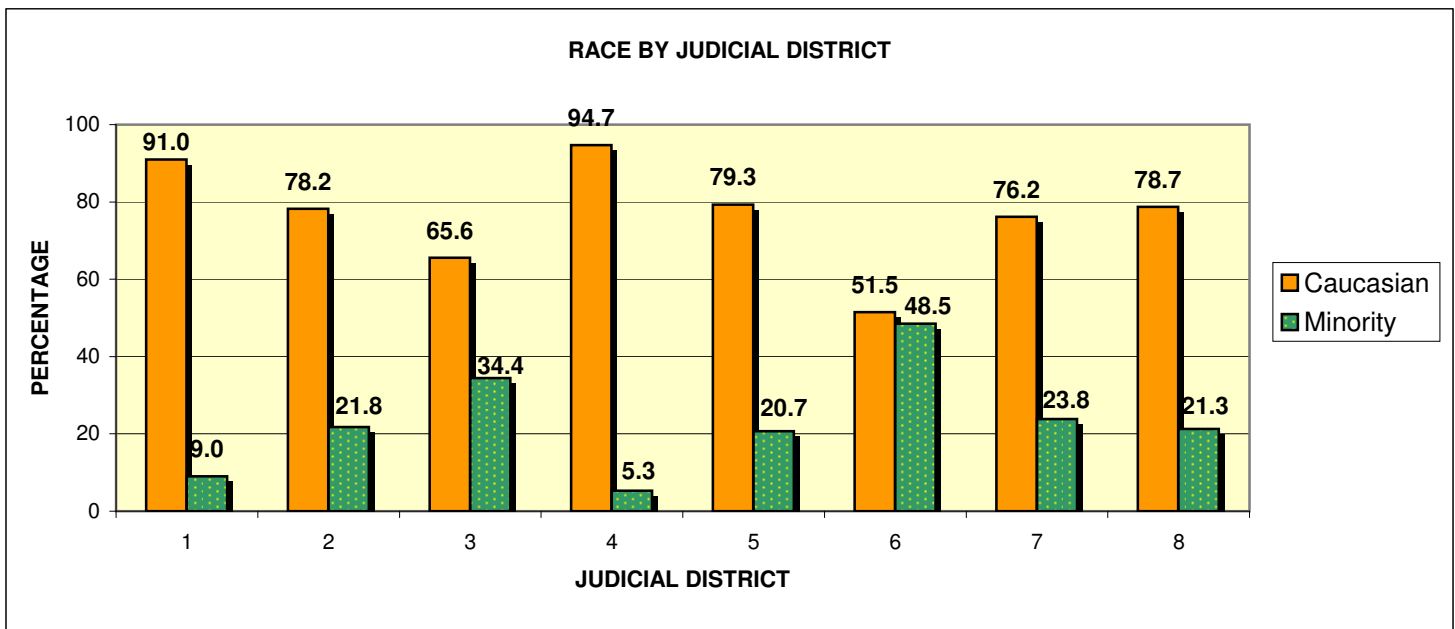
Performance Measure	N	<i>Declined</i>	<i>Same</i>	<i>Improved</i>	N	<i>Not Applicable</i>	<i>Not Reported</i>	<i>Invalid</i>
Attendance	4,085	50.6%	11.2%	38.2%	232	142	68	22
Truancy	2,076	46.8%	19.4%	33.8%	2,241	2,166	71	4
Tardiness	3,506	44.0%	15.4%	40.6%	811	691	120	0
Suspensions	2,095	36.1%	24.5%	39.4%	2,222	2,137	84	1
Law Violations	1,908	17.0%	43.0%	40.0%	2,409	2,355	54	0
GPA	3,404	42.3%	12.2%	45.5%	913	0	913	0

**JUVENILE COURT SCHOOL LIAISON PROGRAM DATA
2008 STATEWIDE AGGREGATED DATA
BY JUDICIAL DISTRICT**



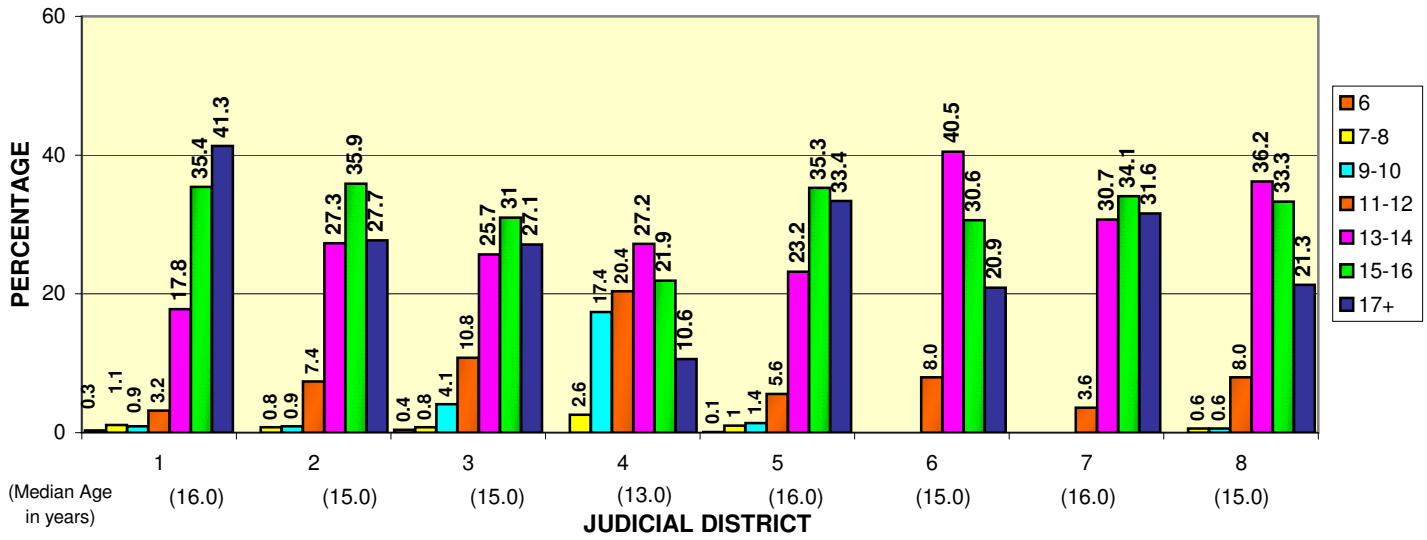
Gender	N	MALE	FEMALE
Statewide %	4,317	63.4%	36.6%

NOTE: Due to rounding, percentages may not add up to 100%.



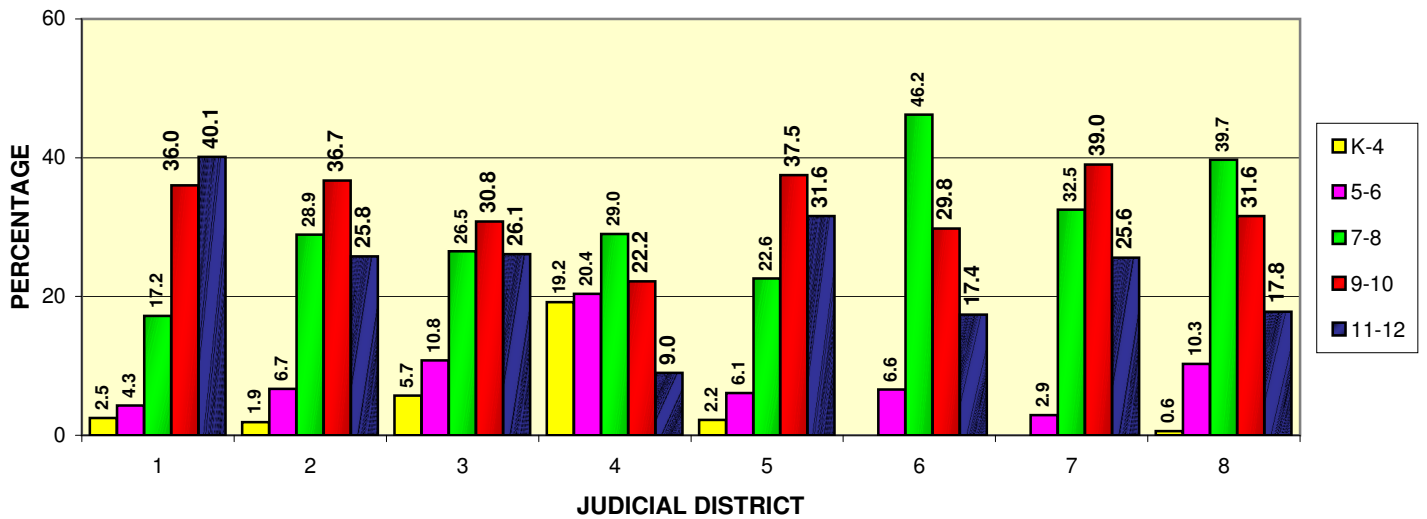
RACE	N	CAUCASIAN	AFRICAN-AMERICAN	HISPANIC	NATIVE AMERICAN	ASIAN/PACIFIC ISLANDER	MIXED/OTHER
Statewide %	4,317	77.5%	10.3%	7.6%	1.0%	0.8%	2.7%

AGE BY JUDICIAL DISTRICT



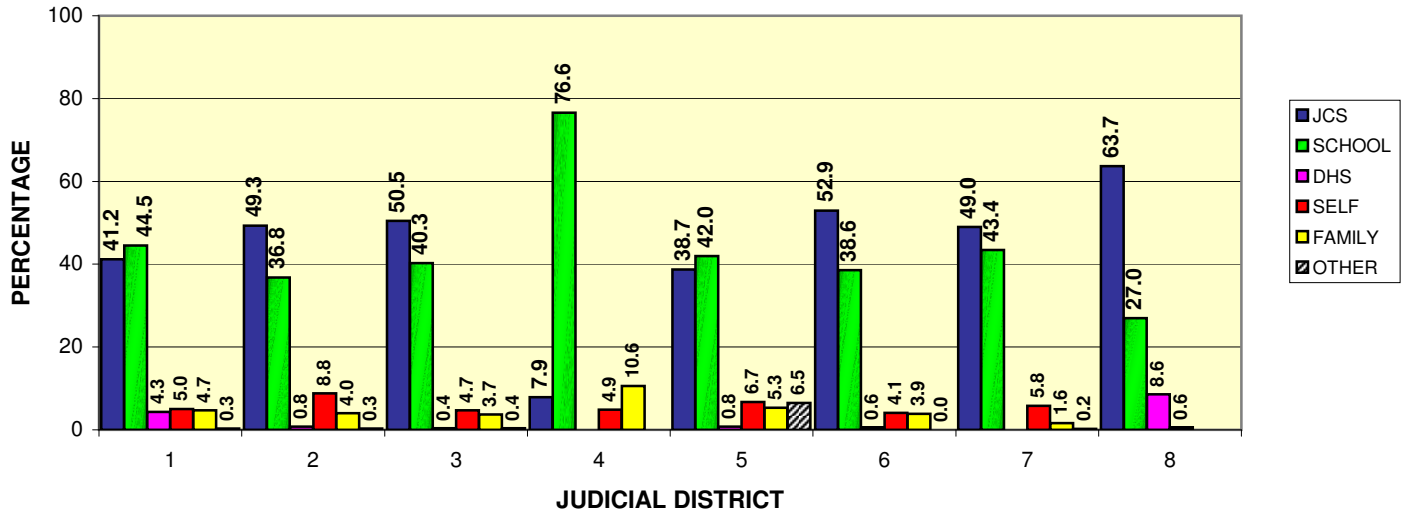
AGE	N	1-6	7-8	9-10	11-12	13-14	15-16
Statewide %	4,317	0.1%	0.8%	2.2%	7.2%	26.4%	33.5%
		17+					
		29.7%					

GRADE BY JUDICIAL DISTRICT



GRADE	N	K-2	3-4	5-6	7-8	9-10	11-12
Statewide %	4,317	0.8%	2.3%	7.3%	27.5%	34.7%	27.5%

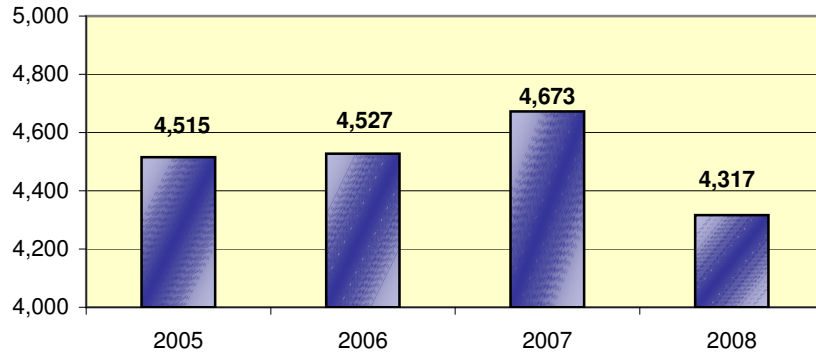
REFERRAL SOURCE BY JUDICIAL DISTRICT



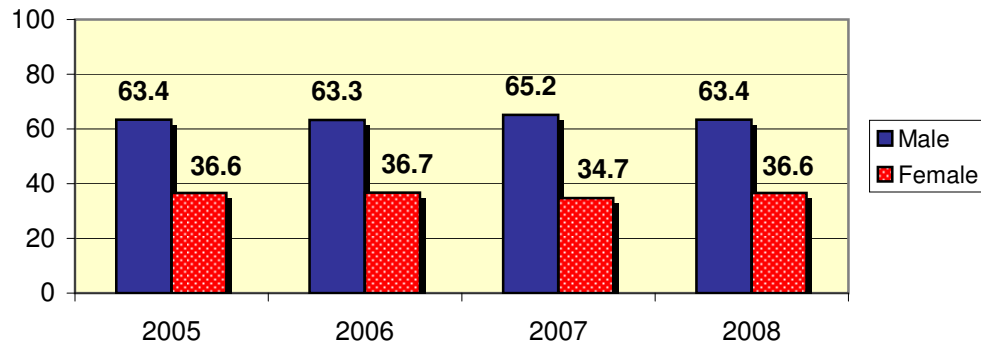
REFERRAL SOURCE	N	JCS	DHS	SCHOOL	SELF	FAMILY	OTHER
<i>Statewide %</i>	4,317	43.7%	1.4%	42.6%	5.9%	4.4%	2.0%

STATEWIDE TRENDS 2005-2008

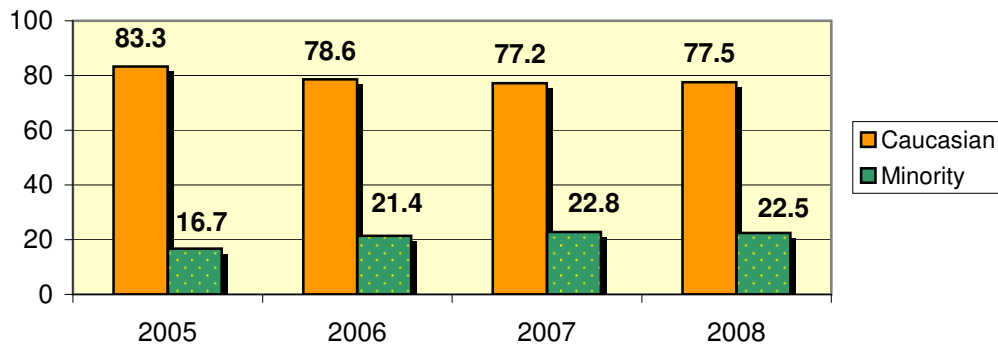
Number of Records-Statewide



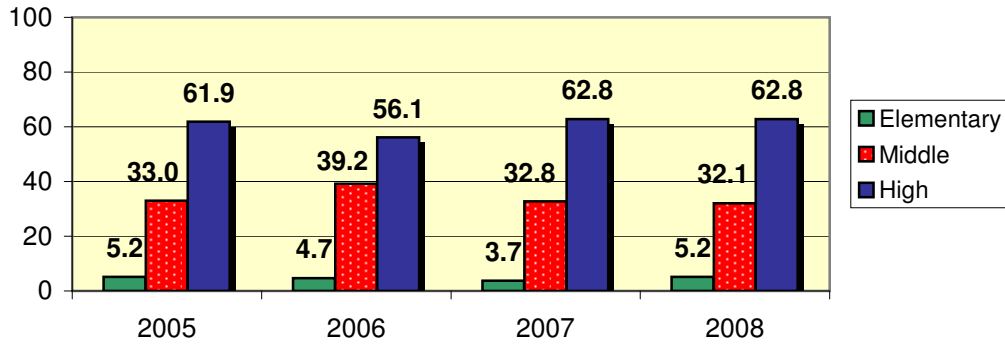
Gender-Statewide



Race - Statewide

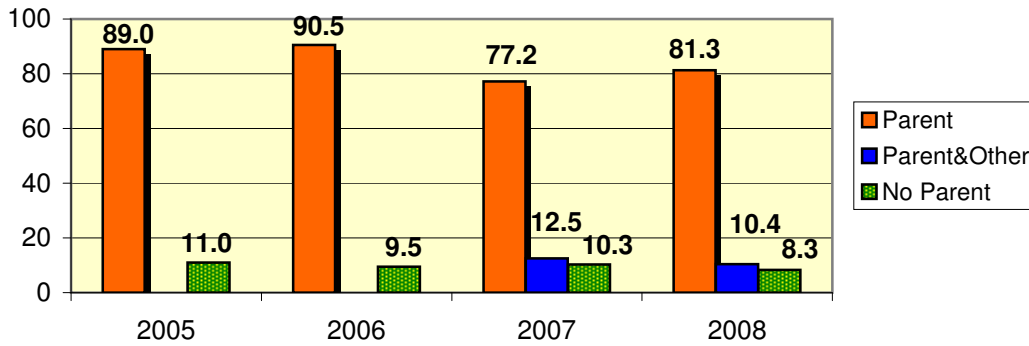


Grade Level - Statewide



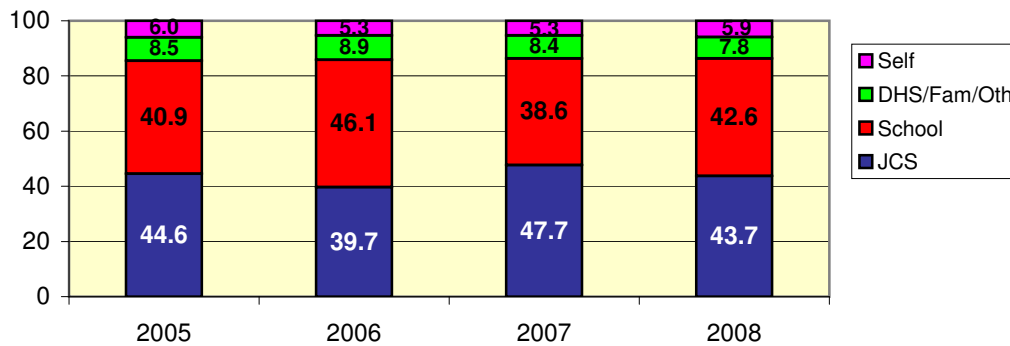
(Youth in Alternative Schools are counted under High School)

Parent/Guardian-Statewide



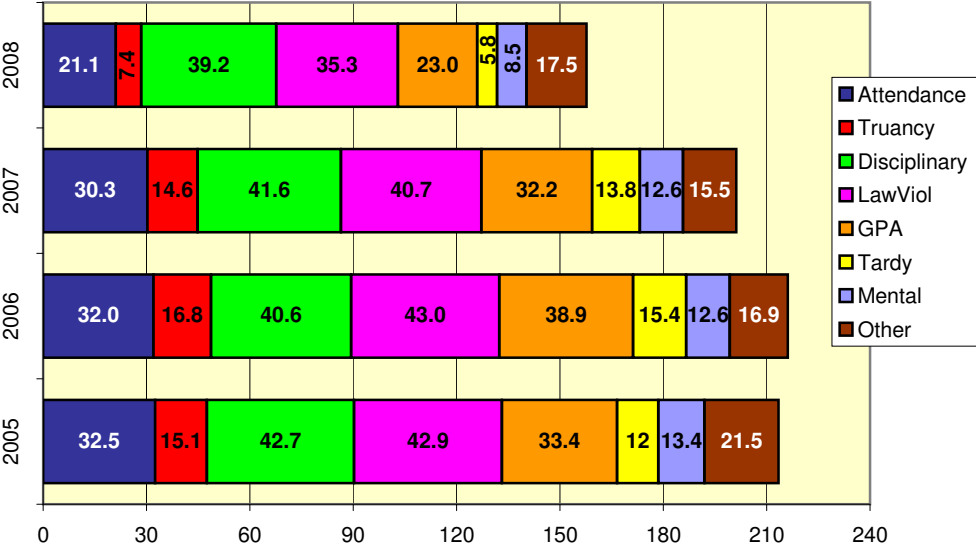
(The category of Parent & Other was added in 2007)

Referral Source - Statewide



(School Liaison referrals are counted under JCS)

Referral Reasons - Statewide



(Percentages in this chart will not add up to 100 as up to two responses were allowed)